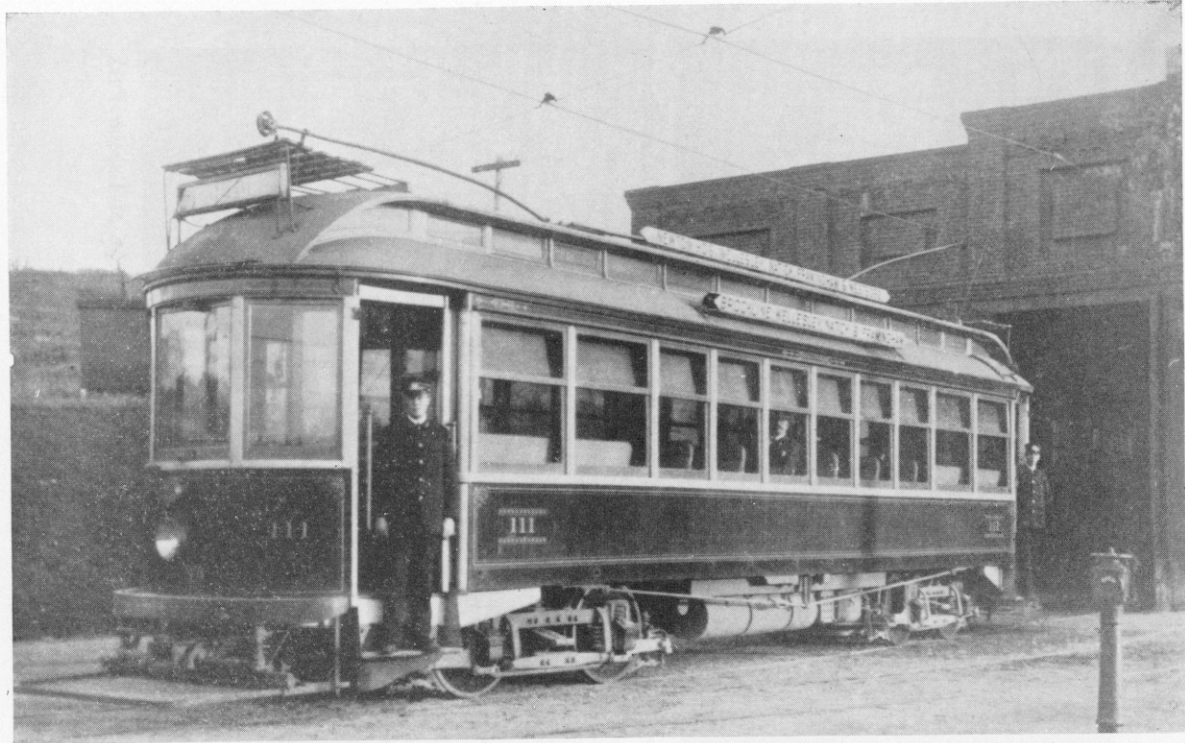




The Library Building on the campus of Webber College at Babson Park, Florida.



One of the two large dormitories of Webber College of Babson Park Florida.



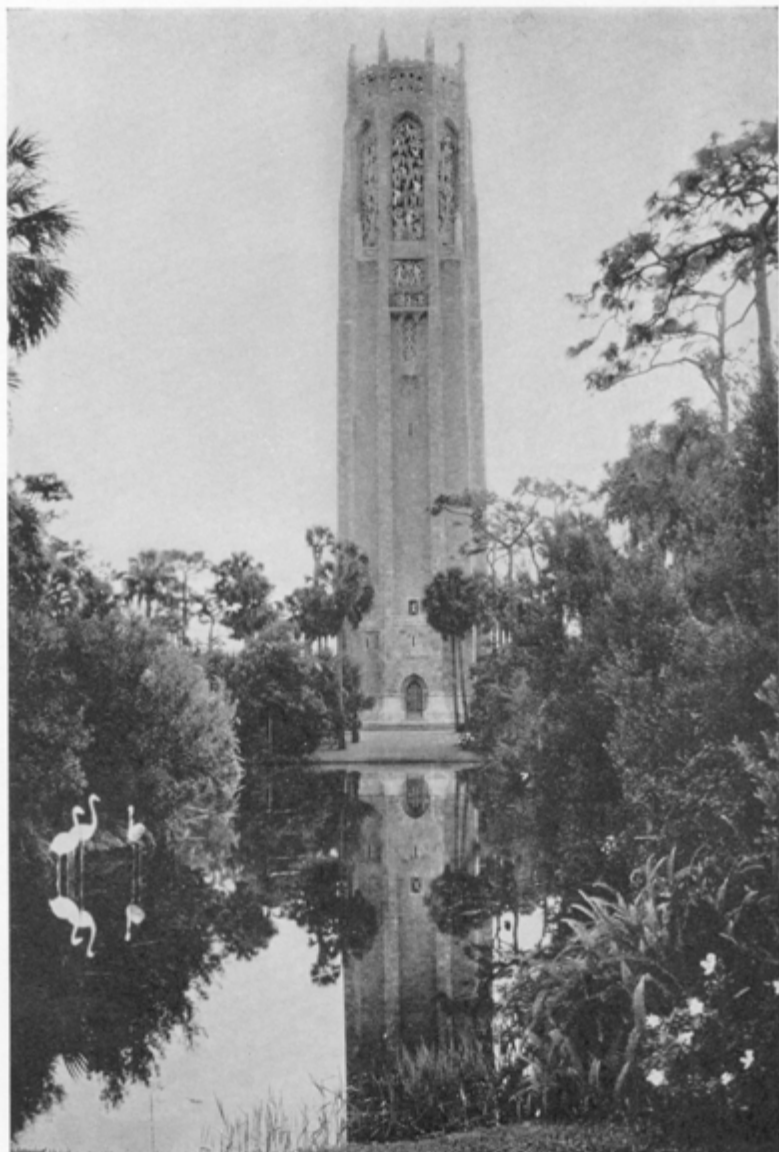
One of the large and heavy interurban trolley cars operated at high speed on double-track electric lines from 1900 to 1925 between large cities. The use of such cars has since become almost extinct. The picture is one of the cars being operated on the Boston & Worcester when the company was purchased by the Babson interests.



One of the modern buses which are now being used to carry a larger number of people in less time between Boston, Worcester, Springfield, and New York than did the large interurban cars. Future developments of motor coaches will probably make this one look out of date.



The house on my ranch of 12,000 acres on the outskirts of Babson Park, Florida. At the left is Walton R. Brewster, my Florida manager; at the right, Mike Breen, my chief ranchman.



The famous Singing Tower, built by my friend, the late Edward W. Bok. This Singing Tower is within a few hundred feet of our winter Florida home at Mountain Lake, which is seven miles north of Babson Park.