

**BABSON COLLEGE**

# Babson Fellows Program for Entrepreneurship Educators



## Immerse Yourself in Babson's Entrepreneurship Ecosystem

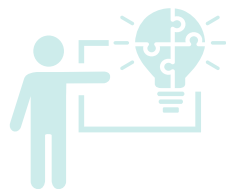
Next Program: November 8–12, 2021

The Babson Fellows Program for Entrepreneurship Educators is a four-day, immersive experience on the Babson campus that allows participants to directly participate in Babson's ecosystem and develop an action plan to advance their institution's entrepreneurship agendas. The program is capped at 20 participants, allowing for detailed and individualized sessions with world-class entrepreneurship faculty. The week includes:

- » Learning proven concepts for effectively teaching entrepreneurship from Babson faculty
- » Sitting in on Babson classes to observe a variety of professors and student interactions
- » Touring the innovation district in Boston
- » Discussing research and/or teaching interests during individual meetings with Babson professors
- » Attending on-campus entrepreneurship events



Develop a tight-knit network of international education professionals



Be immersed in Babson's world-renowned entrepreneurship ecosystem with 1:1 coaching from Babson faculty



Leave with a detailed action plan to advance an entrepreneurship initiative at your institution

## Faculty Co-Directors



**Heidi Neck**  
Professor, Jeffrey A. Timmons Professor of Entrepreneurship, Academic Director Babson Academy

Heidi Neck is an award-winning educator, writer, international speaker, consultant, and entrepreneur who believes in the power of entrepreneurship education to change the world and the people who create it. Her latest book, *The Ideate Method*, guides students through an ideation technique empirically proven to help novice entrepreneurs generate high-potential new venture ideas.



**Mary Gale**  
Senior Lecturer, Academic Division: Entrepreneurship

Educator, entrepreneur, business leader, and consultant with over 30 years of strategic, marketing, and operations experience, Mary Gale's expertise spans a broad range of industries including software-based services, diagnostics, telecommunications, surface preparation, consumer electronics, consumer-packaged goods, and education. Teaching in the Babson College Entrepreneurship Division since Fall 2011, Gale also is the Co-Faculty Director for the BEE Women for Africa Launch & Grow program.

# HOW IT WORKS >>

Entrepreneurship educators interested in applying must submit the following:

- >> Curriculum Vitae
- >> Description of entrepreneurship initiative you are working on
- >> A recommendation from your dean

The application deadline is August 15, 2021. All materials must be submitted in English.

**Program Cost: \$4,600.** The cost includes program materials, accommodations, and meals at the award-winning Babson Executive Conference Center. Cost for **faculty from Babson Collaborative member schools is \$4,250.** Please email [babsonacademy@babson.edu](mailto:babsonacademy@babson.edu) for more information about discounts.

## Sample Schedule\*

The program consists of a series of live sessions, classroom visits, and coaching sessions over the course of four days.

| Sunday  | Monday  | Tuesday  | Wednesday   | Thursday   | Friday  |
|---|---|--|---|--|---|
|   | Breakfast 7–8:30 a.m.   | Breakfast 7–8:30 a.m.  | Breakfast 7–8:30 a.m.   | Breakfast 7–8:30 a.m.  | Breakfast 7–8:30 a.m.   |
| All classes will be held in the Thames Room at the Babson Executive Conference Center unless otherwise specified. | 8:30–10:30 a.m.<br>The Practice View of Entrepreneurship Education  | 8:30–11:15 a.m.<br>MBA Classroom Visit: Entrepreneurship and Opportunity<br>Needham/Wellesley Room in Olin Hall                              | 8:30–9:15 a.m.<br>FME: Babson's signature Undergraduate Course  | 8:30–10 a.m.<br>The Co-Curricular Experience: A Conversation with Center Directors   | 8:30–10 a.m.<br>Teaching Scale  |
|   | Break 10:30 a.m.  |  | 9:30 a.m. Walk to Tomasso   | Break 10 a.m.  | Break 10 a.m.   |
|   | 11 a.m.–Noon<br>Project Share and Shape   | 11:30 a.m.–12:30 p.m.<br>Meet With Coaches   | 9:45–11 a.m.<br>FME Class Observation<br>Tomasso Hall 202 and 209<br>11:15 a.m.–2:30 p.m.<br>Coaching or Meetings | 10:30 a.m.–Noon<br>Teaching Failure  | 10:30 a.m.–12:30 p.m.<br>Participant Action Presentation and Closings |
|   | Lunch Noon–1 p.m.   | Lunch 12:30–1:30 p.m.  | Lunch 12:30–1:30 p.m.   | Lunch Noon–1 p.m.  | Lunch 12:30–1:30 p.m.   |
| 4 p.m.<br>Check-in at the Babson Executive Conference Center  | 11 a.m.–Noon<br>Campus Tour and Group Photo<br>2:30–3:30 p.m.<br>Defining Entrepreneurship with your Students | 1:30–3 p.m.<br>Coaching/Meetings/Class Visits<br>3–4:30 p.m.<br>Teaching Entrepreneurship: How? To Whom? Why?<br>Blank Center Televideo Room | 1:30–2:30 p.m.<br>Tour of Weismann Foundry<br>2:30–3:30 p.m.<br>Meetings / Free Time                              | 1 p.m.<br>Leave for CIC and Mass Challenge Tours<br>2–3 p.m.<br>CIC Tour<br>3:30–4 p.m.<br>Mass Challenge Tour               |   |
|   | Break 3:30 p.m.   | 5–6 p.m.<br>How to Tuesday: Tech Entrepreneurship<br>Luksic 101<br>6:30–9 p.m.<br>Optional Class Visits                                      |   |  |   |
| 5–6 p.m.<br>Welcome Reception<br>Fireside Living Room   | 4–5:30 p.m.<br>A Global Mindset for Entrepreneurship Education  |  |   | You may stay in Boston or return to Babson for meetings. No class visits available. Prepare for Action Project Presentations |   |

\*schedule subject to change

07/21\_ENRLMKT2-2985

**#1 IN ENTREPRENEURSHIP FOR 28 CONSECUTIVE YEARS**  
— U.S. News & World Report

Ready to be part of the Babson community?  
**Apply by August 15, 2021**

Visit [babson.edu/educatorsfellowsprogram](http://babson.edu/educatorsfellowsprogram) or email [babsonacademy@babson.edu](mailto:babsonacademy@babson.edu) for more information.

## CONNECT WITH US



[Babson](#)



[BabsonCollege](#)



[Babson College](#)



[BabsonCollege](#)