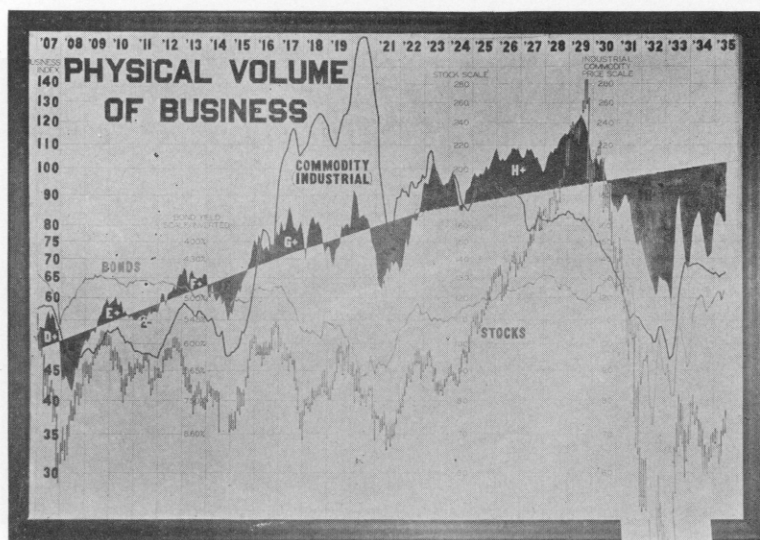
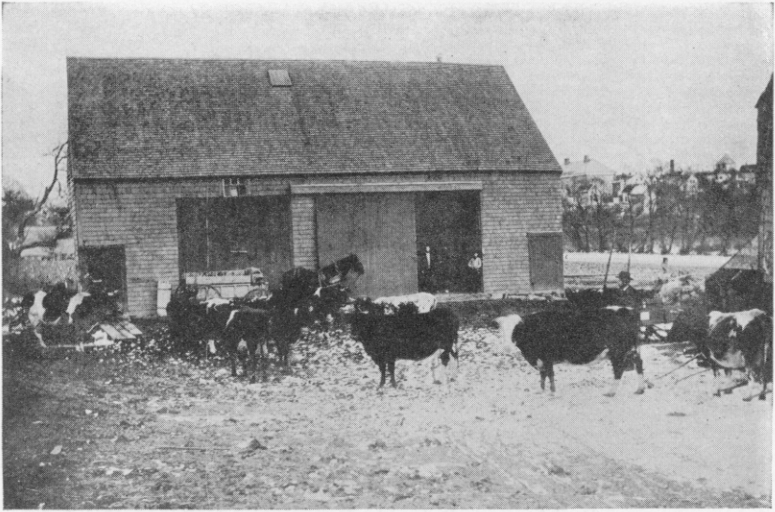


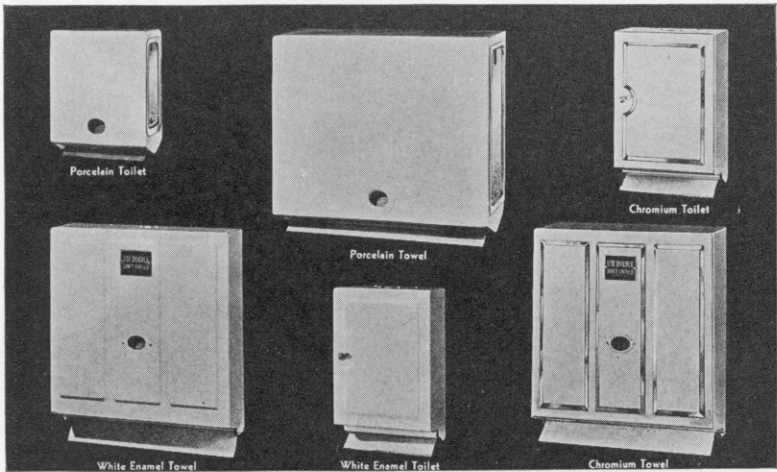
Administration Building of *Babson's Reports*, with Roger W. Babson exhibiting the Babsonchart at the close of one of his Conferences.



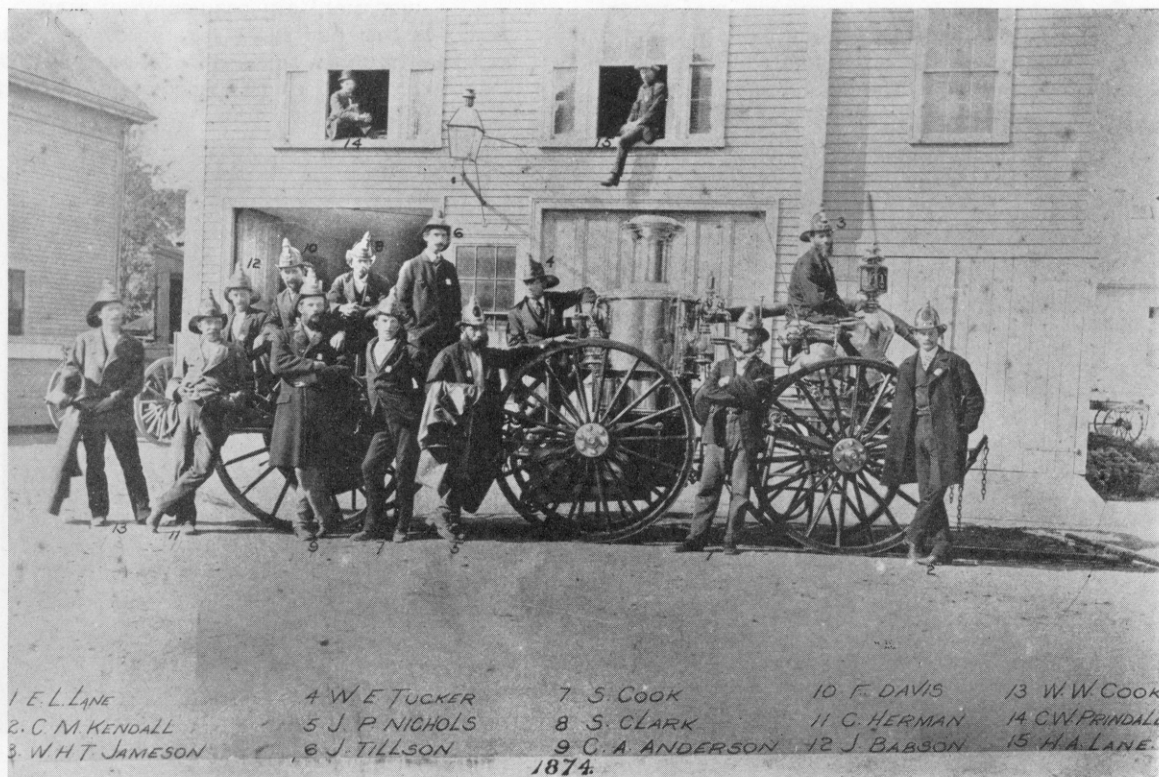
A close-up view of the Babsonchart as it appeared in July, 1935. The areas above the Normal Line represent prosperity, and the areas below represent depression. The solid line represents commodity prices, the broken line which runs off the chart at the bottom represents the stock market. The middle line represents the bond market.



My grandfather's barn and cows which supplied milk to the best families of Gloucester in 1880, when sanitation was unknown and everybody used the family roller towel.



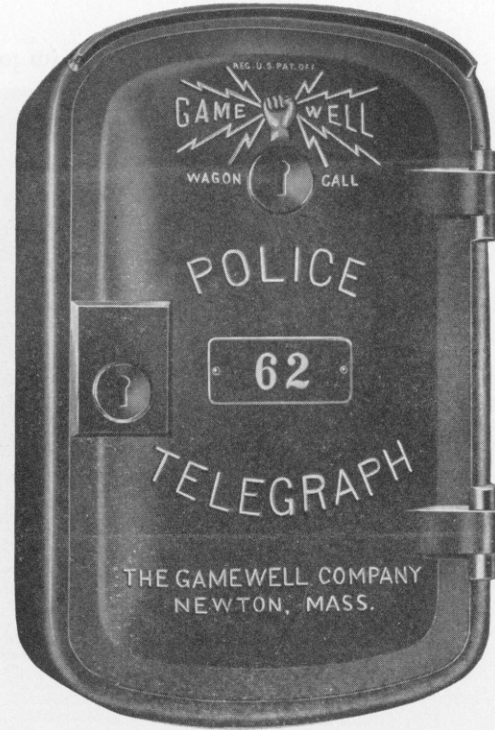
Cabinets manufactured by me fifty years later, to give every member of the family a fresh individual paper towel at all times.



Gloucester's only fire engine of my boyhood days.

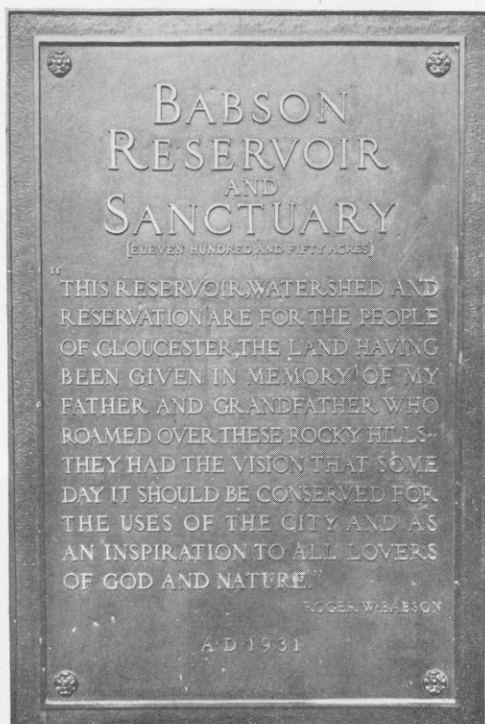


Gamewell fire-alarm boxes which have tremendously reduced fire losses throughout the world. These boxes, together with sprinkler systems and electric "eyes," have revolutionized fire protection.



One of the blue police signal boxes found on prominent corners of almost every city. They are manufactured by the Gamewell Company. These boxes protect your businesses, homes, and families against crime, burglaries, and riots.

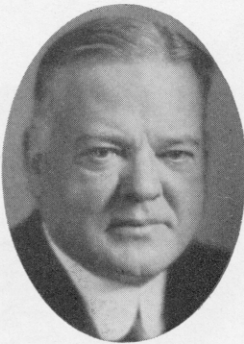




The bronze plaque at the entrance of the Babson Reservoir. This was a later attempt to share my profits with a much larger group; in fact, with the people of my home city.



Pictures of me dictating articles for the *Saturday Evening Post* when I was fighting a return of my tuberculosis troubles.



*Harris & Ewing*

The Presidents with whom I was personally acquainted; namely,  
Theodore Roosevelt, Taft, Wilson, Harding, Coolidge, Hoover, and  
Franklin D. Roosevelt.