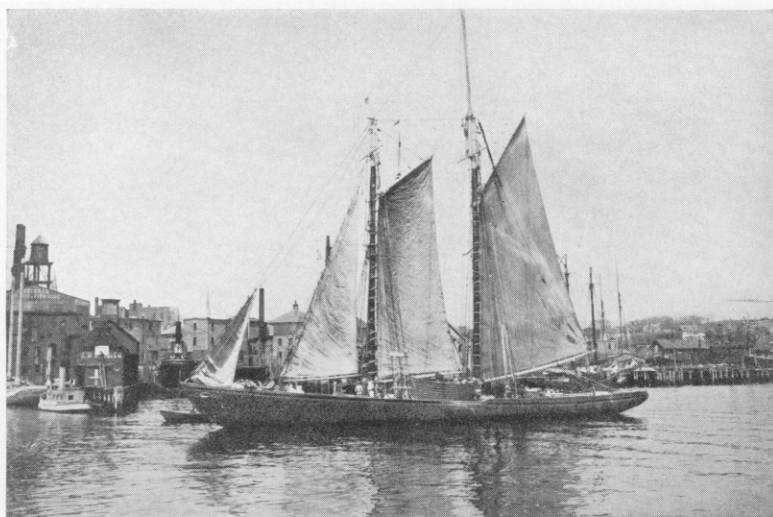




After "retiring" from farming, I secured a job at Andrews Spar Yard, where most of the masts shown in the above picture were made.



A close-up view of a typical Gloucester schooner pulling up near Andrews Spar Yard in Gloucester Harbor.



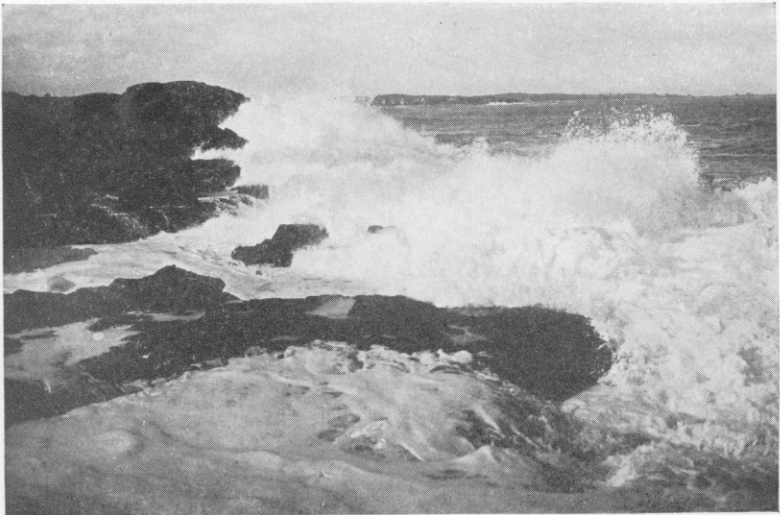
My Father
1916



My Mother
1914



A typical Gloucester street scene of my boyhood. This picture was taken at the corner of Main and Pleasant Streets. My father is driving in his buggy to attend a directors' meeting of the Gloucester Safe Deposit & Trust Company.



Picture of Bass Rocks, where my father took me on that memorable ride to discuss my career. He used the surf and the rocks as an illustration of what I would be up against in business. He was a real rugged individualist.



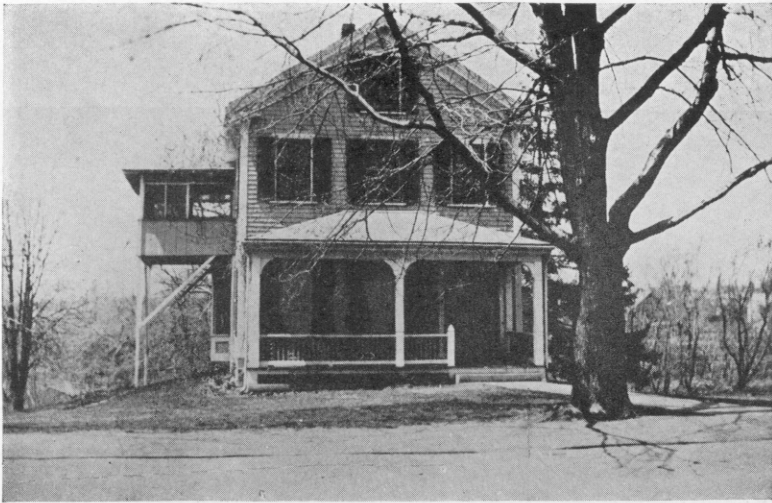
The little building in Wellesley Hills Square, the upper story of which was rented by the Business Statistics Organization for its first years of active business. Note the sign over the porch.



The Crew of the Business Statistics Organization as it existed in 1907. Starting from the left they are as follows: Rena Leggett, Mary Hartley, Bessie Parker, Lila McMahan, Nellie Buck, Harriette Southwick, Arthur Benson, Edward Shattuck (my chief assistant), and Frank Wright.



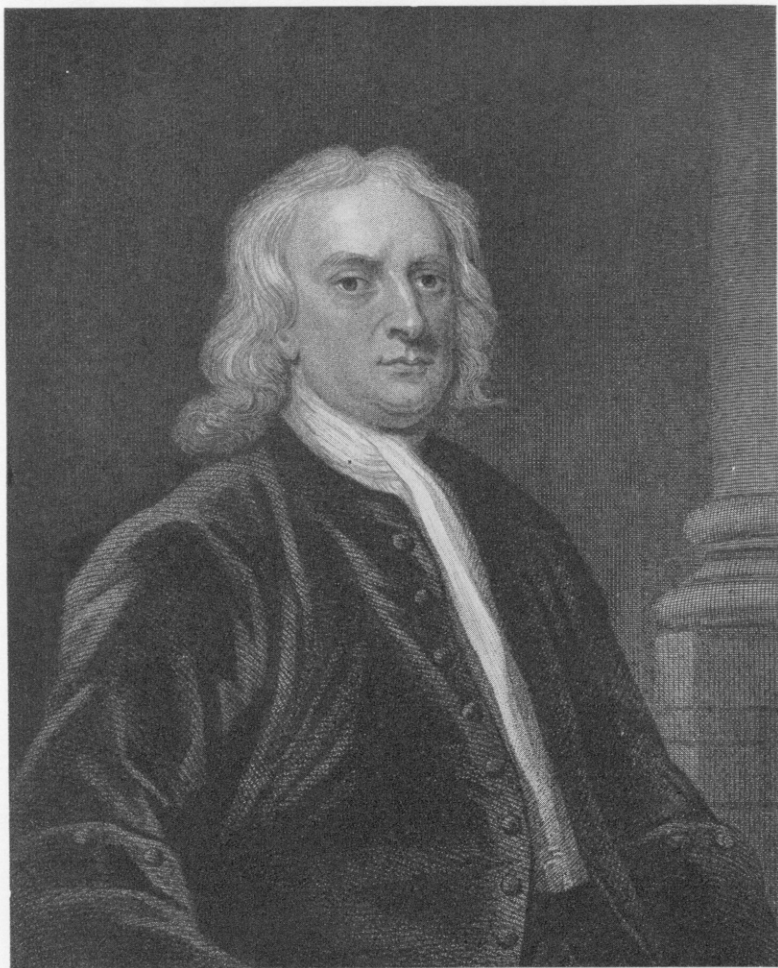
Grace K. Babson, my wife and business associate.



The house on Seaver Street, Wellesley Hills, Massachusetts, where I was "given up for dead." In the kitchen of this house was held the first stockholders' meeting of the Business Statistics Organization, Inc.



Annisquam, Massachusetts. The arrow shows a square house with a cupola where I spent my summers recuperating.



Sir Isaac Newton, born 1642, died 1727, upon whose writings the policies of *Babson's Reports* are based.