



ECN Germany Elective Abroad Spring '25 Travel



Agenda

Introductions

Program Overview

Application/Placement Process

Short-Term Programs for AY24-25

Q&A

SHORT-TERM PROGRAMS TEAM



Elise Beaudin
[she/her]

Director,
Short-Term Programs



Amanda Jew
[she/her]

Program Manager,
Short-Term Programs



Elena Taborda
[she/her]

Program Manager,
Short-Term Programs

FACULTY

Jason Wong

Assistant Professor, Economics

International Parliamentary Scholar 2018,
German Parliament (Bundestag)



BABSON COLLEGE

Glavin Office of
International Education

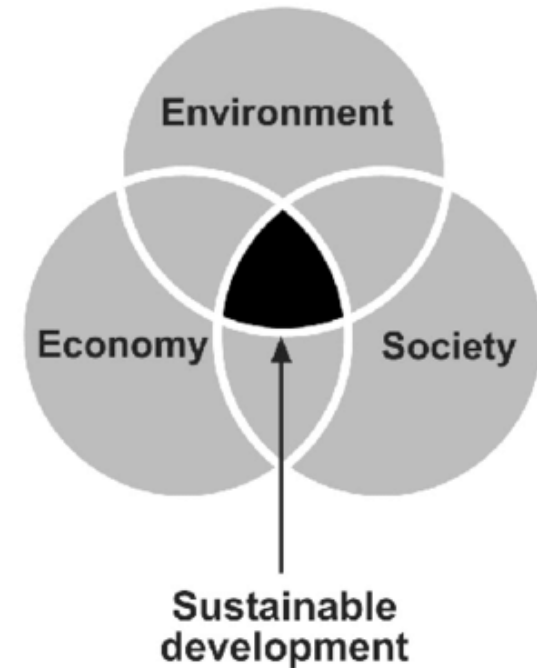
Course Overview

The course will help us answer these questions anchored on three pillars of sustainable development:

How do the history, economic structure, and politics of Germany influence sustainable development policy and outcomes? -> Module 1: Good Governance and Economics

How do public opinion, interest groups, and institutions pave the way for Germany to lead in renewable energy, recycling, and climate change policy? What are the unresolved tensions? -> Module 2: Environmental Sustainability

How should we confront the disparities in labor market, education, health, and wealth because of German reunification, historical guest worker migration, and recent refugee migration? -> Module 3: Social Sustainability



Learning Objectives:

1. Students will demonstrate a basic understanding of the modern German political and economic structures with a focus of post-war economics and politics
2. Using political-economic models and case studies from the pre-departure lectures and in-country site visits, students will recognize and explain the key features of German environmental and energy policy
3. Students will gain an understanding of the complex interactions between the economy, political institutions, and social tensions surrounding issues of reunification, migration, integration, and identity
4. Given a sustainability challenge, students will be able to analyze the situation in economic terms and propose a set of well-considered and balanced

Academics

- 4-credit Advanced Liberal Arts Elective
- Advanced Experiential
- ECN Concentration

Pre-requisites:

ECN2002 Principles of Microeconomics

Recommended co- or pre-requisites:

SES2000 Socio-Ecological Systems





On Campus Highlights

- 6 Classes (Wednesday evenings) + Pre-Departure Orientation
- Visit from the Consul General or Assistant Consul General of the German Consulate in Boston
- Pre-Departure Dinner
- You will learn basic German!
- You will be assigned a German political party!
- You will also present on a German cultural feature!



On Campus Highlights

Use of windpower and solar energy by federal state
in output (MW)

 Solar energy
 Wind power

32.5 %

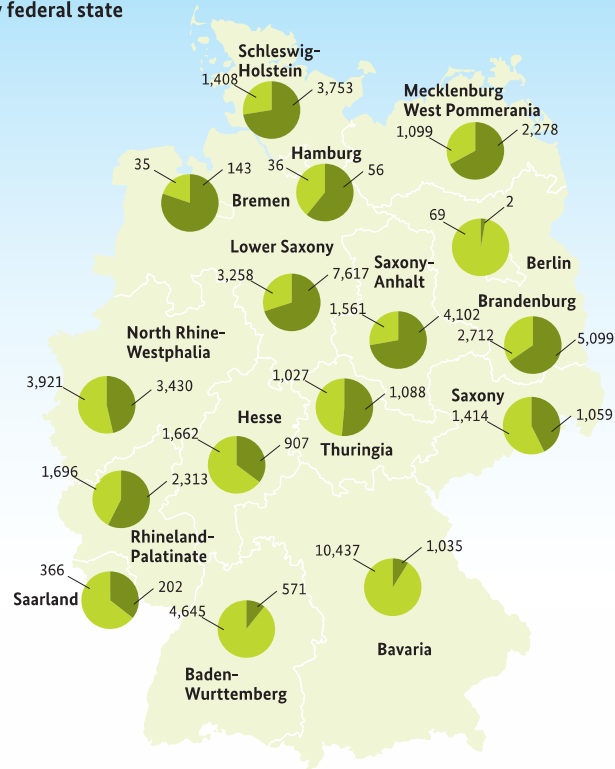
In first-half 2015,
32.5 percent of the
electrical energy
consumed was generated
by renewable sources.

25,000

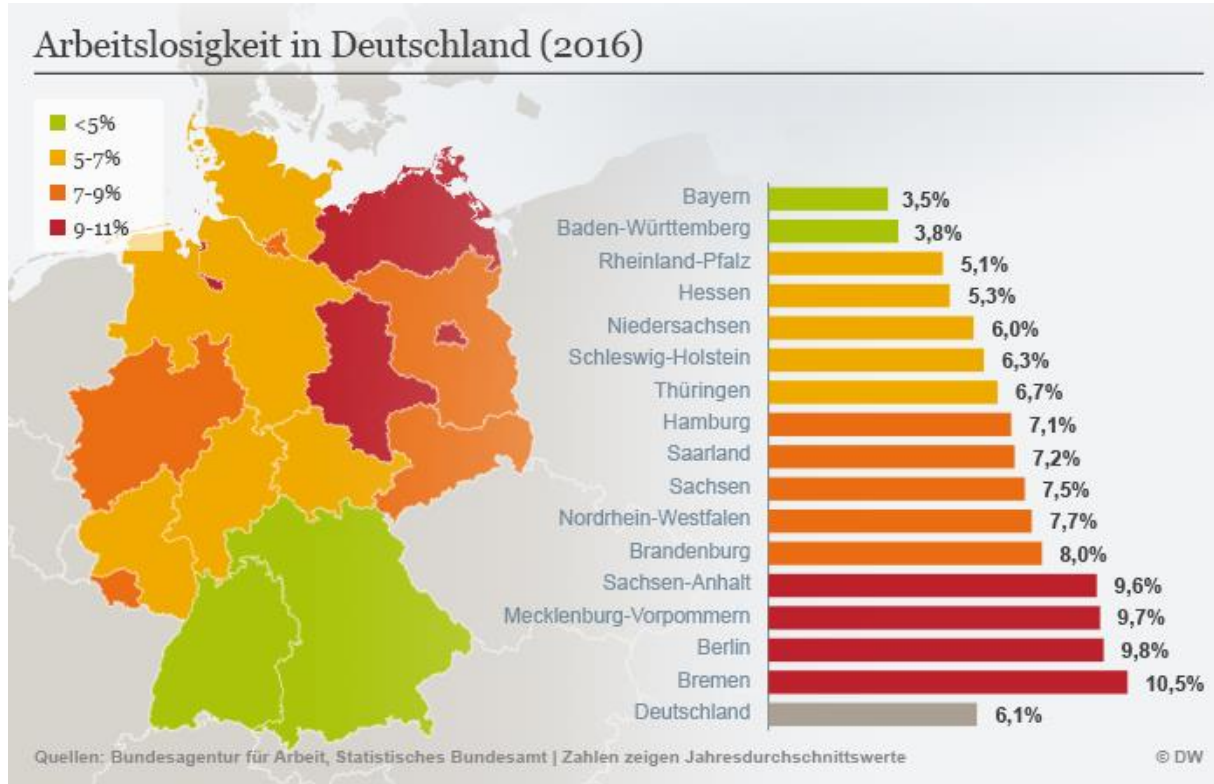
At year-end 2014 a total
of 25,000 wind-power
plants were installed in
Germany.

1.5 million

At year-end 2014 1.5 mil-
lion solar PV plants were
installed in Germany.



On Campus Highlights



In-Country Highlights

- Visit to Mercedes-Benz/Audi/Porsche or equivalent
- Visit Stuttgart 21
- Tübingen, the “fiercely vegan, fairy-tale city”
- Visit to Nordex Wind Energy Company/Sustainable fuels plant
- Visit to Airbus
- Bundestag visit



In-Country Highlights



Client Project



Warning: NOT FOR THE FAINT HEARTED!

Testimonials – Follow
@herrdrwong and
check out

[https://medium.com/
babson-germany](https://medium.com/babson-germany)

BABSON COLLEGE

Glavin Office of
International Education

Spring '25 Elective Abroad

ECN3601 POLITICAL ECONOMY
OF SUSTAINABLE DEVELOPMENT:
CASE OF GERMANY

Professor Jason Wong

@herrdrwong



INFO SESSION – HYBRID
Reynolds, Global Lounge

<https://babson.webex.com/meet/etaborda>

INITIAL APPLICATION OPENS:
MONDAY, OCTOBER 7, 2024

INITIAL APPLICATION DEADLINE:
WEDNESDAY, OCTOBER 23 AT 11:59PM ET

Glavin Office of International Education / Electives Abroad
Hollister Hall / 781-239-4565 / glavinoffice@babson.edu / <http://educationabroad.babson.edu>



INFO SESSION
Monday
October 7
6PM

Learn more
here



Timeline

Important Dates

Pre-travel Academic Sessions

Pre Travel (In Person) Dates

Session	Date/Time (ET)
<i>Logistics Session #1: Planning Meeting</i>	Monday, December 2, 2024 4:45PM - 6:30PM ET Blank Center 021
Class #1: Introduction to Political Economy and Sustainability	Wednesday, January 22, 2025 4:45PM - 6:30PM ET Gerber Hall 101
Class #2: German Political System **Group Dinner after class	Wednesday, January 29, 2025 4:45PM - 6:30PM ET Gerber Hall 101
Class #3: German Economy	Wednesday, February 5, 2025 4:45PM - 6:30PM ET Gerber Hall 101
Class #4: Environmental Issues	Wednesday, February 12, 2025 4:45PM - 6:30PM ET Gerber Hall 101
Class #5: Social Issues	Wednesday, February 19, 2025 4:45PM - 6:30PM ET Gerber Hall 101
<i>Logistics Session #2: Pre-Departure Orientation</i>	Wednesday, February 26, 2025 4:45PM - 6:30PM ET Gerber Hall 101
Class # 6: Wrap-Up and Midterm Quiz	Wednesday, March 5, 2025 4:45PM - 6:30PM ET Gerber Hall 101

Travel Dates

Thursday, March 13 – Sunday, March 23, 2025

Course Dates

Friday, March 14 – Sunday, March 23, 2025

Post Travel - Group Presentations

Wednesday, April 23, 2025



Let's Review

Application Process

Important Dates & Deadlines

Financials

Q&A

Getting Ready to Apply

Brochure Page

- Review details on brochure page
- Ensure course fits into your academic plan and course schedule

Dates

- Check your calendar
- Discuss on-campus and travel dates with all 'stakeholders'

Passport

- Check the expiration date (> 3 - 6 mo. post travel – **September 23, 2025**)
- Apply for a (new) passport

Visas

- Research your visa requirements

ECN3601 Political Economy of Sustainable Development: Case of Germany



Overview

Dates

Academics

Finances

Application

Contact

DEI

ABOUT THE COURSE

Germany has emerged as one of the world leaders in sustainability and innovation since the end of WWII. How has the political economy of Germany shaped its role in sustainability in Europe and in the world? With the new "traffic light" coalition, would we see an acceleration towards sustainable development goals in Germany, or would this be hampered by the rise of the far right? The course meets first as an on-campus seminar to introduce you to the political and economic structures as well as the major environmental and sustainability debates in Germany. We will then spend spring break traveling in Germany to learn on the field, including various business visits and a visit to the German Parliament (Bundestag). The course culminates in a client-oriented project presented to members of the German-American business community.

PROGRAM SNAPSHOT

Lead Faculty	Jason Wong
Time Frame	Spring 2025
Travel	Yes - Stuttgart, Hamburg, and Berlin, Germany



Brochure Page

Overview
Dates
Academics
Finances
Application
Contact

www.babson.edu/educationabroad

BABSON COLLEGE

Glavin Office of
International Education

Wellness: Special Needs & Accommodations

Do you:	What to Do
>> Have a food allergy, intolerance, or other dietary restriction?	Meet with your Program Manager to discuss food options in your destination and any questions or concerns you may have.
>> Wish to request housing, academic, or other accommodations from the Office of Accessibility Resources?	To request accommodations for a Short-Term Program, complete and submit the Application Form located on the Accessibility Services Hub site prior to enrollment in the course
>> Have any physical, mental health, or other medically related needs?	Consult with your health care provider and/or Babson Health & Wellness resources. Program Manager available to consult on pace and logistics of travel as part of these conversations.
>> Want to learn more about diversity and inclusion abroad or away?	Visit our Diversity & Inclusion page to learn more about: students with disabilities abroad, multicultural students abroad, religion & spirituality abroad, women abroad, athletes abroad, and LGBTQ+ students abroad.

ECNXXXX Political Economy of Sustainable Development: Case of Germany

ECNXXXX POLITICAL ECONOMY OF SUSTAINABLE DEVELOPMENT: CASE OF GERMANY

SPRING | PROF. JASON WONG

[Overview](#)[Dates](#)[Academics](#)[Finances](#)[Application](#)[Contact](#)[DEI](#)

HOW TO APPLY

Please visit our website to learn more about the application process.

NOTE: If you are planning to study abroad during Spring 2024, you **cannot** apply for this Elective Abroad program as well. If you are going to study abroad during Fall 2023, please contact the program manager to discuss your plan.

HOW TO REGISTER

The program manager will register students who have submitted their program commitment requirements, including the program fee, following acceptance to the course.

PROGRAM MANAGER/CONTACT

Amanda Jew: ajew1@babson.edu

Dates / Deadlines:

Term	Year	App Deadline	Decision Date	Start Date	End Date
------	------	--------------	---------------	------------	----------

There are currently no active application cycles for this program.

[Apply Now](#)

Application Requirements


STP: UG Travel Elective Abroad
Application

STP: Acknowledgement of Pre-
Departure Requirements

www.babson.edu/educationabroad

BABSON COLLEGE

Glavin Office of
International Education



ELECTIVES ABROAD & AWAY

Commitment Process

A step-by-step guide

01

Log In

to the
Education
Abroad Portal

02

Commit

or Decline
Placement

03

Review

Dates & Policies
Clear Calendar
of Conflicts

04

Complete

All Online
Commitment
Materials

05

Pay

\$500 Deposit

BEFORE Commitment Deadline

Important Dates & Deadlines

Initial Application Opens	Monday, October 7, 2024
Initial Application Deadline	Wednesday, October 23, 2024 @11:59PM ET
Rolling Application Opens (If space allows)	Thursday, October 24, 2024
Selection Email Sent	Thursday, October 31, 2024
Rolling Application Closes	Monday, November 4, 2024 @11:59PM ET
Student Acceptance Commitments	Wednesday, November 6, 2024 @11:59PM ET
Acceptance Email Sent	Friday, November 8, 2024
Rolling Applicants Commitments	Wednesday, November 13, 2024 @11:59PM

HOW MUCH WILL MY SHORT-TERM PROGRAM **COST?**

PROGRAM
FEE

+

BABSON
TUITION

+

TRAVEL &
MEALS

-

GRANTS &
SCHOLARSHIP

Estimated Total Cost: \$4,400 + Tuition (4 credits)

BABSON COLLEGE

Glavin Office of
International Education

Germany – March Break 2025

Item	Amount	Notes
Program Fee	\$4,400	<ul style="list-style-type: none">• Included: International Airfare, Airport Transfer, Accommodations, breakfast, ground transportation, planned program meals and cultural excursions.• Not included: Tuition, visa costs, additional meals, and personal expenses.• Payment: The program fee is paid to the Glavin Office.
Babson Tuition	4-credits	<ul style="list-style-type: none">• Tuition is paid directly to SFS and is included in the fall/spring semester flat-rate tuition charge (up to 16 credits).
Travel & Meals (additional costs)	\$930	<ul style="list-style-type: none">• Estimated Meals: \$688• Estimated Incidentals: \$243• Visa (if applicable)
<u>Estimated</u> Total Cost: \$5,330 + Tuition (4 credits)		

Financial Considerations (UG)

Program Fee (Glavin)

- Any deposit to confirm a student's enrollment in the course, as well as the remaining balance of the program fee, is paid directly by the student to the **Glavin Office**.

Tuition Cost (SFS)

- Undergraduate tuition is based on your matriculation date with the college. For more information about Babson's undergraduate tuition rates, visit [Tuition and Other Expenses](#).
- To discuss tuition, your financial situation and funding options, contact [Student Financial Services](#).

Financial Considerations (UG)

Scholarships

- Students who receive a full-tuition scholarship can use a portion of their scholarship to pay for their tuition cost.

Grants

- Current Babson Grant or full-tuition scholarship recipients will receive a \$2,500 Education Abroad Grant and may use those funds toward the program fee. Once you commit to the program, SFS will disburse the grant to your Workday account and you can request a transfer to the Glavin Office.
- Global Learning Fund Grant is designed to increase access to education abroad programs for students with financial need. Applications due **Wednesday, October 23, 2024**

Loans

- Students can choose to borrow loans to help cover expenses.

Short-Term Programs AY 2024-2025

Winter 2025: January Travel | Spring Enrollment



South Africa

Rolling Applications
Close on 10/7/24
at 11:59PM



Portugal

No longer
accepting
applications



San Francisco

No longer
accepting
applications

Spring 2025: March Travel | Spring Enrollment



Germany



Spain



New York



**Malaysia/
Thailand**



**United Arab
Emirates**



Greece



South Korea



United Kingdom



France



Japan

Questions?

Course Information

Professor Jason Wong

jwong6@babson.edu

Financial Information

Student Financial Services

sfs@babson.edu

Application & Registration Information

Elena Taborda, Program Manager

etaborda@babson.edu

Please let us know that you
were here!



BABSON COLLEGE

Glavin Office of
International Education